

Fruit Grower Land Auction

479 Acres of Blueberries, Apples & Farm Land
Tuesday, April 11, 2017 - 1PM - Van Buren & Berrien Counties

Auctioneer's Note: These growers have decided to retire from farming and have combined their real estate into one auction to allow potential bidders the opportunity to buy several hundred acres to start your business or add to your current business. Outstanding opportunity to buy well maintained and producing farms.

- Outstanding opportunity to buy producing farms for your production this summer!
- Approximately 479 Acres Total!
- Offered in separate parcels, in any combination of parcels or in its entirety.

Auction to be held at:
Baymont Inn & Suites
1555 Phoenix Rd., South Haven, MI

MIEDEMA
AUCTIONEERING, INC.
LIVE AUCTIONS

601 Gordon Industrial Ct., Byron Center, MI 49315
"Leaders in Innovative Auction Marketing Methods"



Auction held in cooperation with
Heartland Agricultural Services, LLC
1201 N. Benton Center Rd., Benton Harbor, MI 49022
(269) 934-9970

"The prominent broker for farm land in Michigan!"

FOR ADDITIONAL INFORMATION & BIDDERS PACKET VISIT
MIEDEMAAUCTIONEERING.COM OR CALL 1-800-527-8243

Fruit Grower Land Auction

479 Acres of Blueberries, Apples & Farm Land

Tuesday, April 11, 2017 · 1PM · Van Buren & Berrien Counties

Owner: Weber, Kurt R.

Parcel 1 - 40 Acres

County: Berrien
Township: Bainbridge
Section: 3
Peaches: 15 Acres, Apples: 12 Acres,
Cherries: 7 Acres

Owner: Branch, Gayle

Parcel 2 - 40 Acres

County: Van Buren
Township: Covert
Section: 24
Bluecrop: 24 Acres & Mixed (Rubles, Rancoacas, Barrows): 8 Acres

Owner: Mora, Herminio

Parcel 3 - 10 Acres

County: Van Buren
Township: Bangor
Section: 18
Jersey: 6 Acres

Owner: Stelter, Ralph S.

Parcel 4 - 20 Acres

County: Van Buren
Township: Covert
Section: 24
Jersey: 10.6, Rubles: 5.4 Acres, Bluecrop: 0.5 Acres

Parcel 5 - 57 Acres

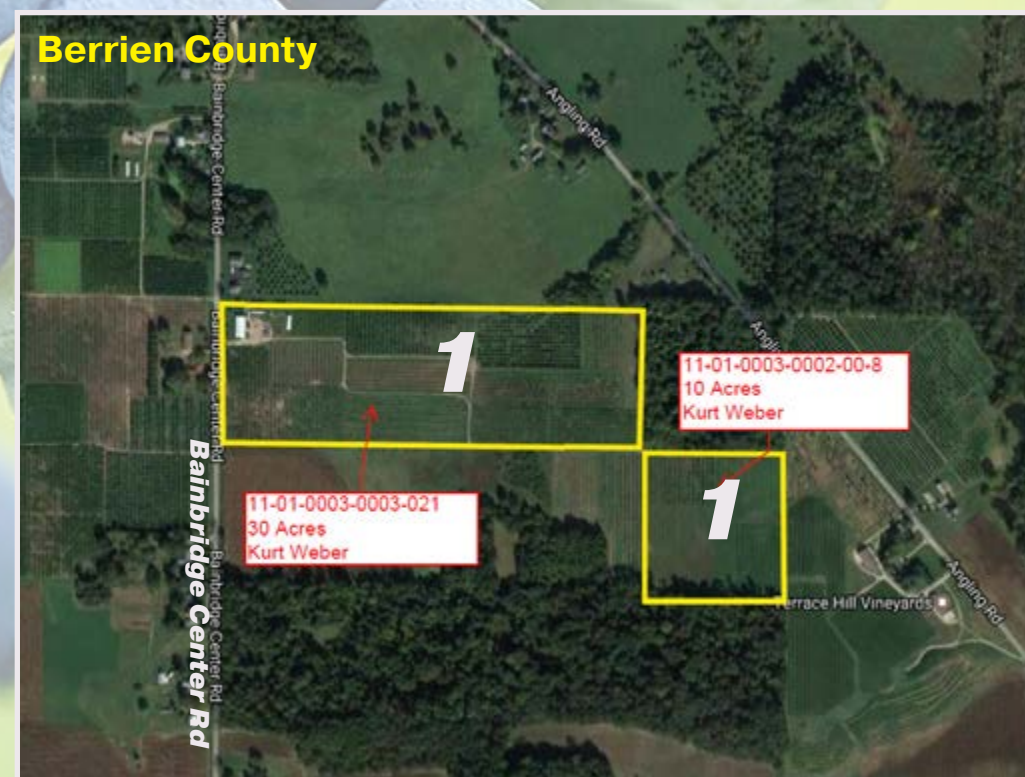
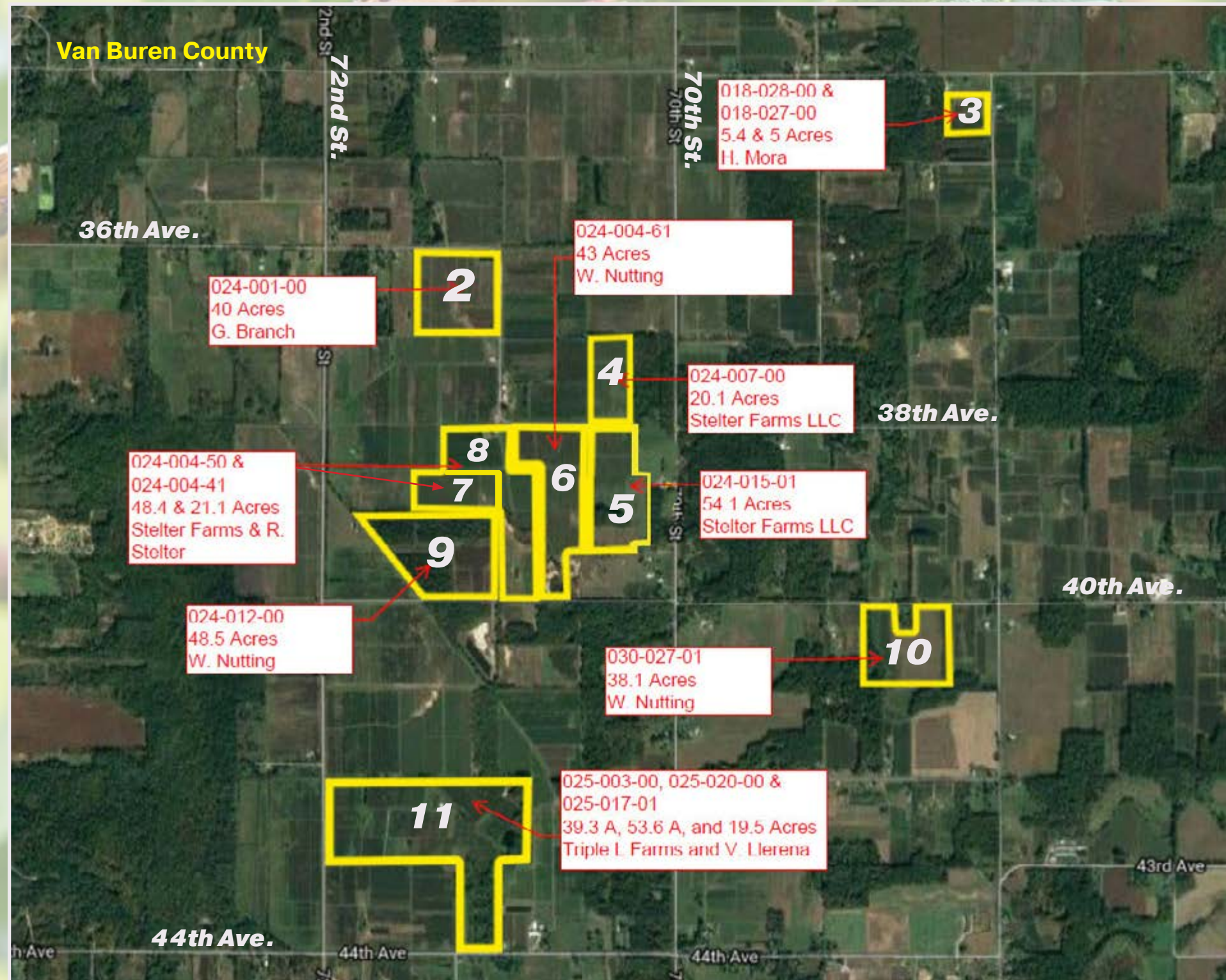
County: Van Buren
Township: Covert
Section: 24
Jersey: 5.4 Acres, Rubles: 9.5 Acres, Bluecrop: 10.9 Acres, Mixed: 1.1 Acres

Parcel 7 - 21 Acres

County: Van Buren
Township: Covert
Section: 24
Jersey: 17 Acres

Parcel 8 - 48 Acres

County: Van Buren
Township: Covert
Section: 24
Jersey: 20.7 Acres, Concord: 7 Acres, Mixed: 5 Acres



Owner: Nutting, William L.

Parcel 6 - 43 Acres

County: Van Buren
Township: Covert
Section: 24
Jersey: 23 Acres, Bluecrop: 3 Acres, Concord: 3 Acres, Rubles: 3 Acres

Parcel 9 - 48 Acres

County: Van Buren
Township: Covert
Section: 24
Jersey: 8 Acres, Bluecrop: 3 Acres, Berkley: 2 Acres, Bluecrop: 1 Acre, Stanley: 1 Acre, Mixed: 1 Acre

Parcel 10 - 38 Acres

County: Van Buren
Township: Bangor
Section: 20
Jersey: 14 Acres & Bluecrop: 3 Acres

Owner: Llerena, Hector & Lupe

Parcel 11 - 114 Acres

County: Van Buren
Township: Covert
Section: 24
Elliot: 5 Acres, Jersey: 60 Acres, Rubles: 10 Acres, Rancoacas: 4 Acres, Rubles: 4 Acres, Berkley: 2 Acres, Mixed: 2 Acres

Auction to be held at:
Baymont Inn & Suites
1555 Phoenix Rd., South Haven, MI



Auction held in cooperation with
Heartland Agricultural Services, LLC
1201 N. Benton Center Rd., Benton Harbor, MI 49022
(269) 934-9970
"The prominent broker for farm land in Michigan!"

Bidders Packet with additional information are available!
Call 1-800-527-8243 or see our website at MiedemaAuctioneering.com.

Walk properties at any time at your convenience

479 Acres of Blueberries, Apples & Farm Land

Tuesday, April 11, 2017 - 1PM - Van Buren & Berrien Counties

MIEDEMA
AUCTIONEERING, INC.
LIVE AUCTIONS

601 Gordon Industrial Court
Byron Center, MI 49315

Auction to be held at:
Baymont Inn & Suites
1555 Phoenix Rd., South Haven, MI

Auction held in cooperation with
Heartland Agricultural Services, LLC
1201 N. Benton Center Rd., Benton Harbor, MI 49022
(269) 934-9970
"The prominent broker for farm land in Michigan!"

Bidders Packet with additional information are available!
Call 1-800-527-8243 or see our website at MiedemaAuctioneering.com.

479 Acres of Blueberries, Apples & Farm Land Van Buren & Berrien Counties

PRSR STD MAIL
U.S. POSTAGE
PAID
Byron Center, MI
Permit No. 19

MIEDEMA
AUCTIONEERING, INC.
LIVE AUCTIONS
601 Gordon Industrial Court
Byron Center, MI 49315

If your mailing label has an express number, please bring this brochure with you for express check-in at auction.

Fruit Grower Land Auction
Tuesday, April 11, 2017
1PM

REAL ESTATE TERMS

REGISTRATION:

Begins at 12PM at Baymont Inns & Suites 1555 Phoenix Rd., South Haven, MI.

DEPOSIT FOR REAL ESTATE:

A deposit of 10% is required at the auction. This deposit is NOT refundable if the buyer does not carry through with the purchase. Your bidding is not conditional upon financing, so be sure you have arranged financing if needed and are capable of paying cash at the closing.

CONDITIONS:

The terms and conditions of this auction will be governed by the contract for the sale of Real Estate (herein called the buy/sell), the following terms are a summary provided for the convenience of the bidder. The buy/sell is available in the bidder's packet and should be reviewed prior to the auction. All properties sell "AS IS WHERE IS" with no warranties of any type expressed or implied as to the merchantability, usability, fitness for a particular purpose, or any matter whatsoever type or nature. Any improvements, which must be made, are the responsibility of the purchaser. All information advertised or stated was derived from

sources believed correct but is not guaranteed. All property dimensions are only approximations. Buyers shall rely entirely on their own information, judgement and inspection of the property and records. The real estate will be sold free and clear of all the liens. The property will however be sold subject to any easements and building and use restrictions of record. The auction company reserves the right to bid to protect the owner's investment. Any announcements made at the auction site take precedence over printed material. Real Estate sells subject to secured creditors acceptance or rejection of high bid.

CLOSING TERMS:

Balance of purchase price due at closing within 45 days. The seller will pay taxes and assessments due on or before the auction. Possession will be given at the closing on vacant land. Seller shall provide an owners title insurance policy in the amount of the purchase price. Closings will be held at a local title company. Closing fees of \$450 will be divided evenly between the buyer and the seller.

BUYERS NOTE:

If you are the successful bidder,

you must go to the closing table to sign all the purchase agreements immediately following the conclusion of the auction. At that time your check will be endorsed as a nonrefundable deposit on the property. Individual purchases are to be considered as singular transactions, not contingent on any other purchases of properties on the auction. The auction will be conducted at the sole discretion of the auctioneer and any bids may be recognized at their discretion.

NEW DATA:

New data, corrections, or changes could be made after the printing of this brochure. Please arrive prior to the start of the auction to inspect and consider any new information and changes.

BIDDERS PACKET:

Complete Bidder's packets, including copies of the buy/sell agreements and more detailed information will be available at the open house or by calling to request a packet be mailed to you. Call Miedema Auctioneering for details at 1-800-LASTBID.

OPEN HOUSES:

Walk properties at any time at your convenience.

AUCTION CALENDAR

Allen Dairy Farms

Sat, March 11 - 10 am - Hudsonville, MI

Having sold the Milk Cows, we will be selling a full line of equipment. Featuring: Tractors, Round Balers, Feed Mixer, Bagger and much more. More details to come. Visit MiedemaAuctioneering.com for more information.

K & V Farms (ONLINE AUCTION)

Tues., March 14 - Decatur, MI

Greg & Randy have sold their farm land and are retiring. Featuring: Case 980 Forklift, Irrigation Pumps, Irrigation Pipes, Nurse Tanks, Wagons & more. Visit Orbitbid.com to bid.

Liquidation of Farm & Blueberry Equipment (ONLINE AUCTION)

Weds., March 15 - Wayland, MI

Farm & blueberry equipment selling via secured creditor. Featuring: BEI Harvester, JD 5525N Tractor, BEI Pull Behind Harvester, Sprayers & more. Visit Repocast.com to bid.

Heinze Farms

Thurs, March 16 - 10am - South Haven, MI

Retirement Auction: 13 JD Tractors (JD8120, JD7800, JD4255, JD6120, JD5103, JD5065, JD420), BEI Blueberry Harvester & much more! More details to come! Visit MiedemaAuctioneering.com for updated information.

Earl Peterson Farms: Farm & Fruit Equipment

Sat., March 18 - 10am - Shelby, MI

The Peterson family has decided to retire from fruit farming after 45 years. This will be a large auction with over 20 tractors, and a large amount of fruit and farm equipment. We will be selling with two auctioneers, come with two buyers! Visit MiedemaAuctioneering.com for updated information.

Spring Hudsonville Fairgrounds Equipment

Sat., March 25 - 10am - Hudsonville, MI

Featuring Farm Equipment, Construction Equipment, Semi Trucks & Trailers, Lawn/Garden Equipment, Tools and more! Sell with us! Call Chuck (616) 560-0839

Tony Brush Farms (ONLINE AUCTION)

Tues., March 28 - South Haven, MI

Tony has discontinued fresh packing business and will sell other farming assets. Featuring: Complete washing & sizing cucumber line, complete squash & gords washing, drying & waxing line, JD 2555 Tractor & more. Visit Orbitbid.com to bid.

Sable Oaks Farms:

Sat., April 8 - 10am - Perry, MI

Featuring very well maintained farm equipment! To include: 2013 Chevy Silverado Crew Cab (less than 20,000 miles). Visit MiedemaAuctioneering.com for details.

Blueberry & Apple Land Auction

Tues., April 11 - 1pm - Van Buren County, MI

Approx 458 total acres will be sold at auction. These growers have been growing for many years but have decided to retire from the fruit growing business.

Farm & Dairy Equipment Auction - Cedar Creek Dairy

Weds., April 12 - 10am - Fremont, MI

Having decided to retire from farming and selling the real estate, we will be selling the farm equipment, Dairy and milking equipment, and livestock equipment at this auction.