

TIMBERWELD MANUFACTURING

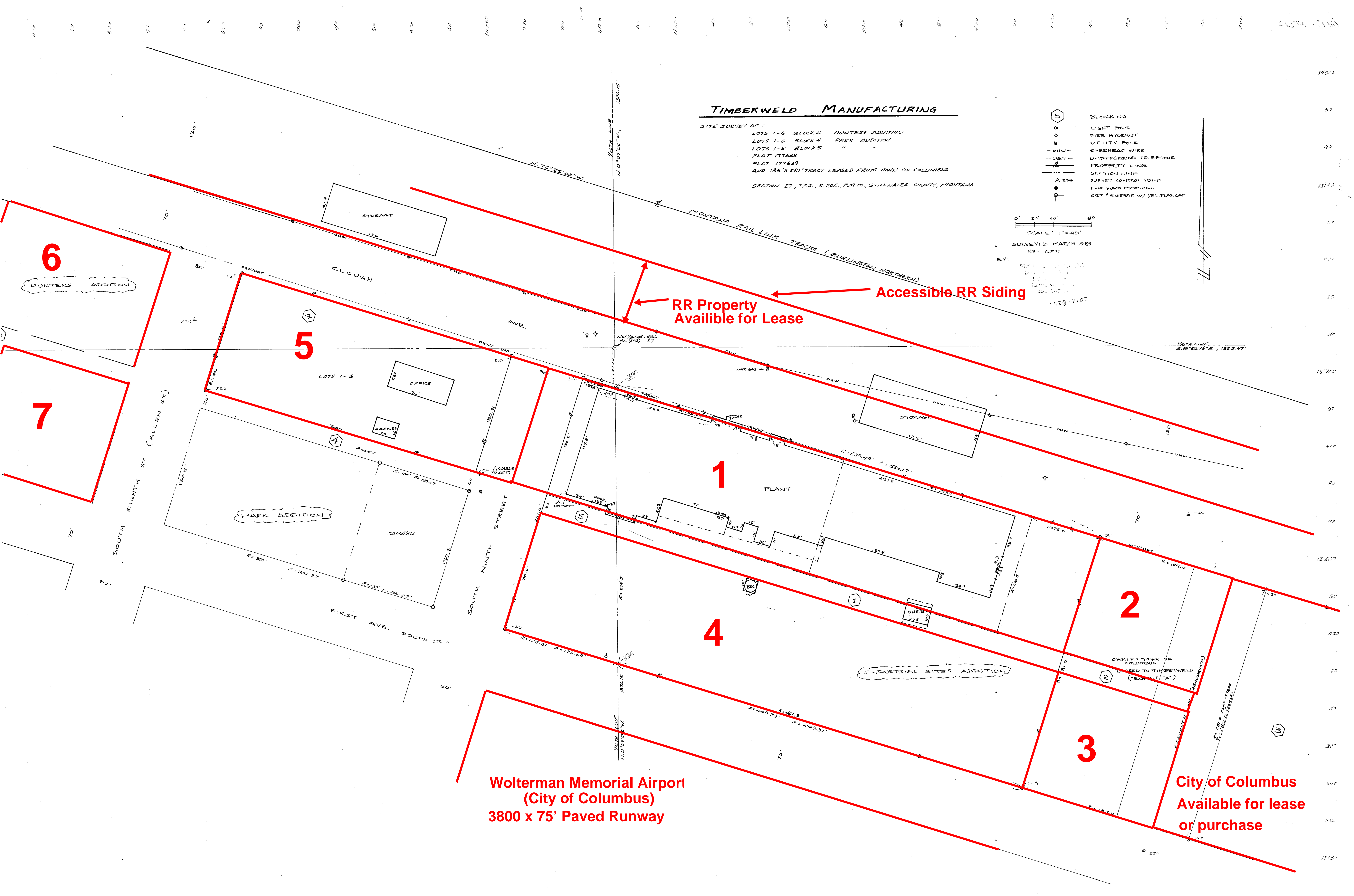
SITE SURVEY OF:
 LOTS 1-6 BLOCK 4 HUNTERS ADDITION
 LOTS 1-6 BLOCK 4 PARK ADDITION
 LOTS 1-8 BLOCKS " " "
 PLAT 177638
 PLAT 177639
 AND 185'x281' TRACT LEASED FROM TOWN OF COLUMBUS
 SECTION 27, T.2S., R.20E., P.M.1., STILLWATER COUNTY, MONTANA

- ⬡ BLOCK NO.
- LIGHT POLE
- ⊕ FIRE HYDRANT
- UTILITY POLE
- OHW — OVERHEAD WIRE
- U&T — UNDERGROUND TELEPHONE
- — — PROPERTY LINE
- — — SECTION LINE
- △ SURVEY CONTROL POINT
- FND WACO PROP. PIN.
- SET #5 REBAR W/ YEL. PLAS. CAP.

SCALE: 1"=40'

SURVEYED MARCH 1989
 89-628

BY: MONTANA SURVEYING
 628-7703



RR Property Available for Lease

Accessible RR Siding

Wolterman Memorial Airport
 (City of Columbus)
 3800 x 75' Paved Runway

City of Columbus
 Available for lease
 or purchase